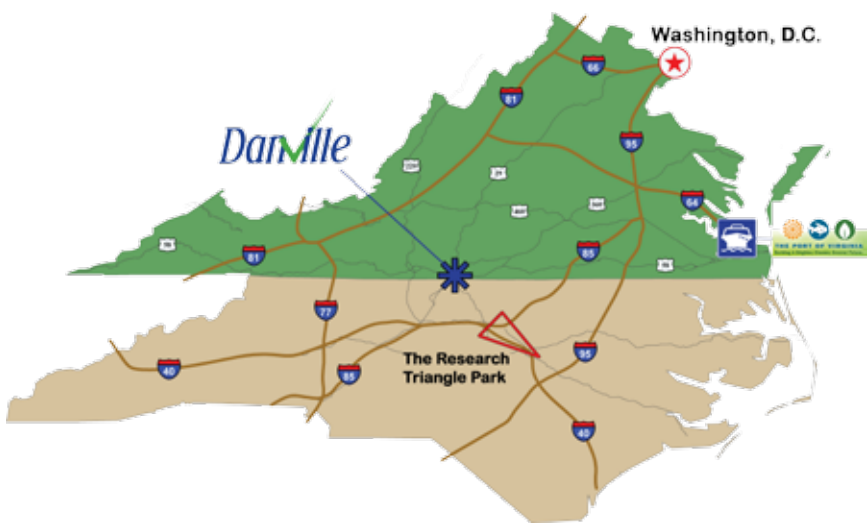
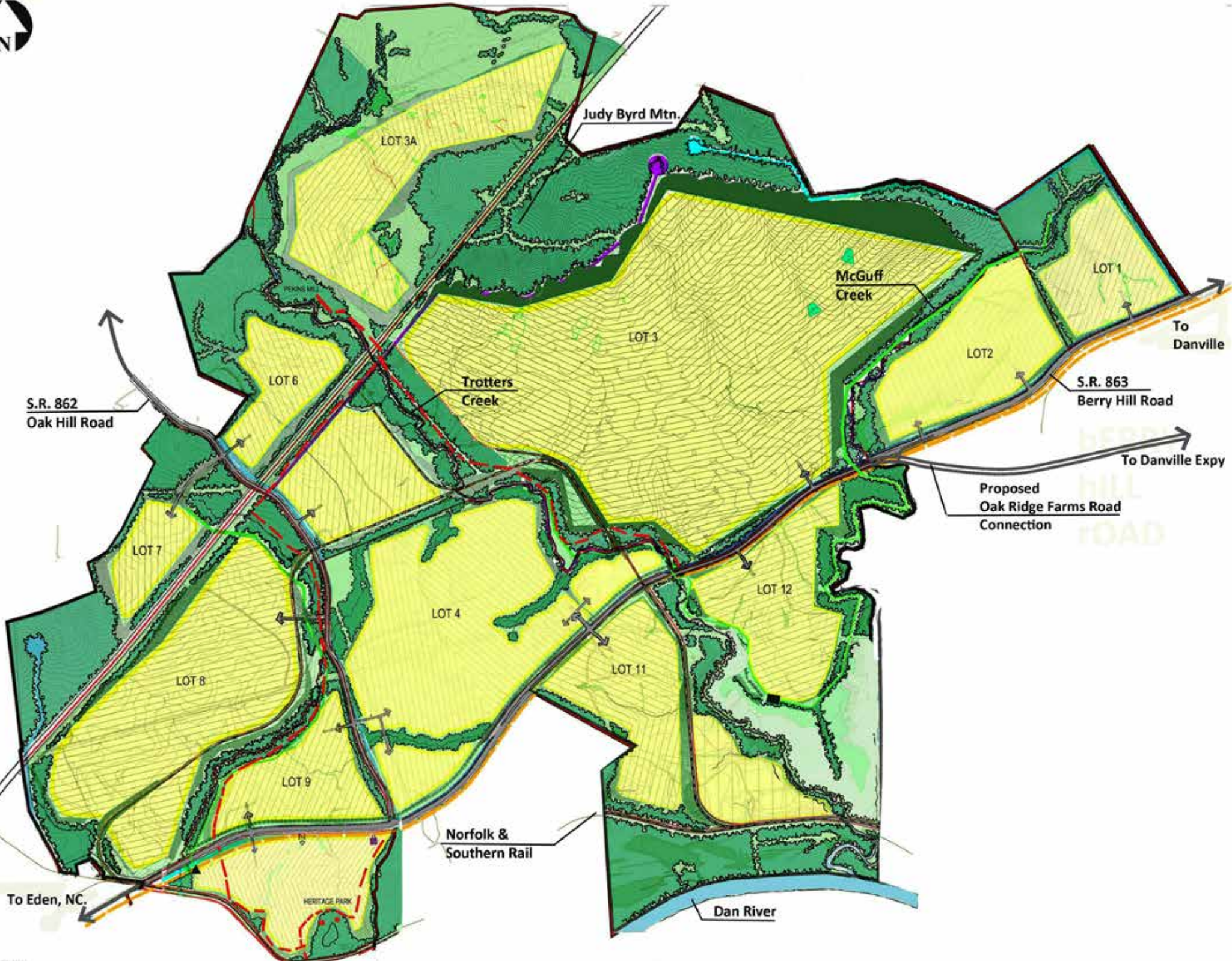


- \$886,950 for Phase 2 of Environmental Review and Permitting
- \$1,192,500 for Water Infrastructure Engineering and Right of Way Acquisition
- \$22,241,567 for Phase two of water line construction and related costs
- \$2,700,000 for continued engineering and utility development
- \$6,208,153 for site development
- \$4,908,240 for Environmental Permitting

LOT 1 =	110 acres - Pad 62 acres +/-
LOT 2 =	130 acres - Pad 83 acres +/-
LOT 3 =	1296 acres - Pad 604 acres +/-
LOT 3A =	129 acres - Pad 129 acres +/-
LOT 4 =	327 acres - Pad 240 acres +/-
LOT 5 =	118 acres - Pad 77 acres +/-
LOT 6 =	101 acres - Pad 59 acres +/-
LOT 7 =	148 acres - Pad 33 acres +/-
LOT 8 =	334 acres - Pad 223 acres +/-
LOT 9 =	98 acres - Pad 64 acres +/-
LOT 10 =	100 acres - Pad 66 acres +/-
LOT 11 =	119 acres - Pad 81 acres +/-
LOT 12 =	237 acres - Pad 93 acres +/-





Judy Byrd Mtn.

LOT 3A

McGuff
Creek

LOT 3

LOT 1

To
Danville

S.R. 862
Oak Hill Road

LOT 6

Trotters
Creek

LOT 2

S.R. 863
Berry Hill Road

To Danville Expy

Proposed
Oak Ridge Farms Road
Connection

LOT 7

LOT 12

LOT 4

LOT 11

LOT 8

LOT 9

Norfolk &
Southern Rail

Dan River

To Eden, NC.

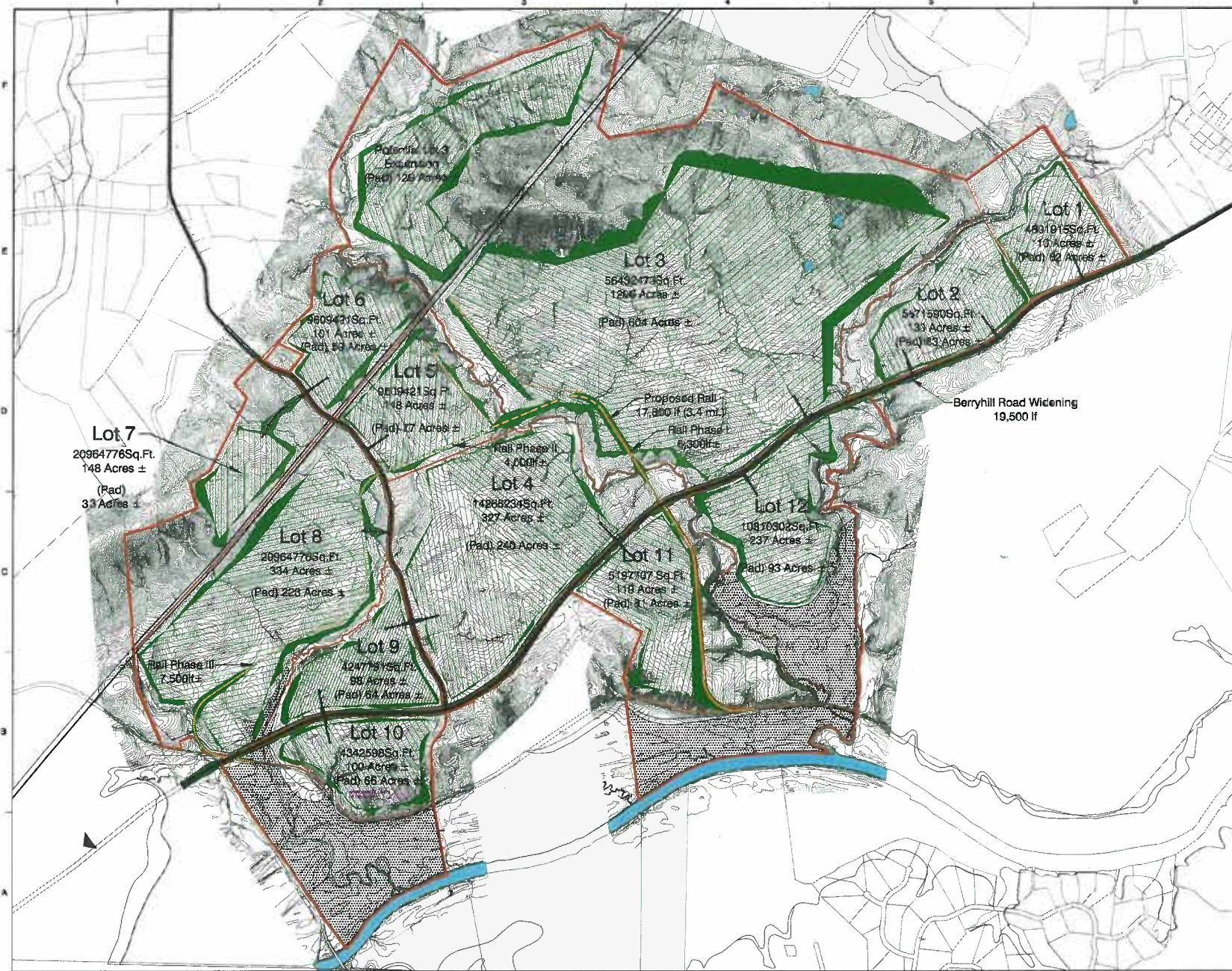
HERITAGE PARK



Dewberry & Davis, Inc.
300 EAST HIGHTSHOE
SUITE 200
DANVILLE, VIRGINIA 24040
PHONE 757.329.2200
FAX 757.329.2201

Danville Pittsylvania County
Regional Industrial Facilities Authority

The Mega Park
Berry Hill Road
Danville, Virginia



SCALE

KEY PLAN

SCALE

No.	DATE	BY	Description

DESIGNED BY _____
APPROVED BY _____
CHECKED BY _____
DATE _____
TITLE _____

PROJECT NO. _____

SHEET NO. _____